



WHEN ENERGY CAN DO FURTHER

Presents

Ultracell

'Quality in Every Language'



UCG150-12 / 12V 150AH

UCG150-12

12V 150AH

Deep Cycle Gel

Ultracell®

Quality in Every Language

UCG150-12



Physical Specification

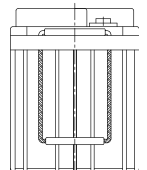
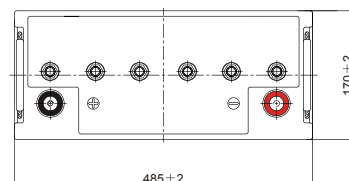
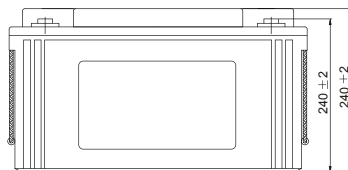
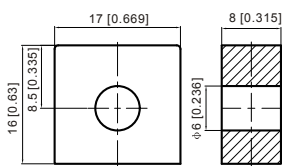
Part Number	UCG150-12
Length	485 ± 2 mm
Width	170 ± 2 mm
Container Height	240 ± 2 mm
Total Height (with terminal)	240 ± 2 mm
Approx Weight	43.5 kg

Specifications

	Nominal Voltage	12V
	Nominal Capacity 20HR)	150AH
Terminal Type	Standard Terminal	F10
	Optional Terminal	F11
Container Material	Standard Option	ABS
	Flame Retardant Option (FR)	UL94-V0
Rated Capacity	20hr, 1.80V/cell, 25°C	156.0 AH/8.04A
	10hr, 1.80V/cell, 25°C	150.0 AH/15.0A
	5hr, 1.75V/cell, 25°C	131.6 AH/26.3A
	1hr, 1.60V/cell, 25°C	96.9 AH/96.9A
Max Discharge Current	1500A (5s)	
Internal Resistance	2.5mΩ	
Discharge Characteristics	Operating Temp. Range	Discharge: -20 ~ 55°C
		Charge: 0 ~ 40°C
		Storage: -20 ~ 50°C
	Nominal Operating Temp. Range	25 ± 3°C
	Cycle Use	Initial Charging Current less than 45.0A. Voltage 14.4V ~ 15.0V Temp. Coefficient -30mV/°C
	Standby Use	No limit on Initial Charging Current Voltage 13.5V ~ 13.8V Temp. Coefficient -20mV/°C
Capacity affect by Temperature	40°C	103%
	25°C	100%
	0°C	86%
Design Floating Life at 20°C	15 Years	
Self Discharge	Ultracell batteries may be stored for up to 9 months at 25°C(77°F) and then a refresh charge is required. For higher temperatures the time interval will be shorter.	

Dimensions

F10 Terminal



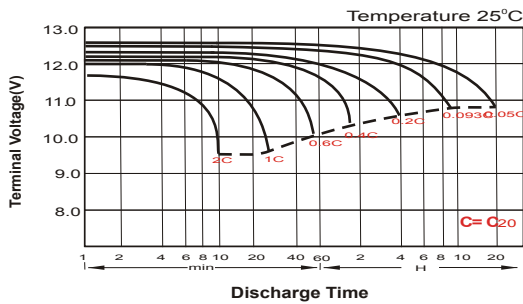
Constant Current Discharge (Amperes) at 20°C

F.V/Ti me	10mi n	15mi n	20mi n	30mi n	45mi n	1h	2h	3h	4h	5h	6h	8h	10h	20h
1.85V/cel l	219.6	184.8	161.5	116.2	92.3	74.9	46.5	36.3	29.4	23.9	20.8	17.0	14.2	7.97
1.80V/cel l	280.6	223.3	190.9	137.1	107.3	83.9	50.8	39.0	31.4	25.6	22.3	18.0	15.0	8.04
1.75V/cel l	308.3	243.9	205.3	142.3	111.4	87.8	52.7	39.8	32.1	26.3	23.0	18.3	15.2	8.12
1.70V/cel l	336.1	260.4	215.8	148.2	115.8	90.5	54.8	40.9	32.9	27.0	23.4	18.6	15.3	8.27
1.65V/cel l	362.7	276.9	229.2	156.3	118.7	93.6	56.3	42.6	34.1	27.7	23.9	18.9	15.6	8.37
1.60V/cel l	393.8	296.1	244.2	165.0	123.8	96.9	58.2	43.9	35.1	28.6	24.5	19.1	15.8	8.42

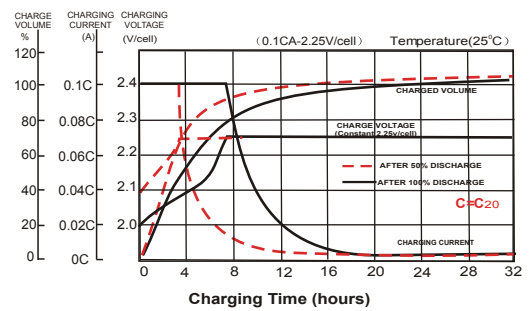
Constant Power Discharge (Watts) at 20°C

F.V/Ti me	10mi n	15mi n	20mi n	30mi n	45mi n	1h	2h	3h	4h	5h	6h	8h	10h	20h
1.85V/cel l	409.8	348.4	307.7	223.3	178.5	145.4	90.7	70.9	57.5	46.9	41.1	33.6	28.0	15.9
1.80V/cel l	516.6	414.7	358.2	260.3	205.9	161.9	98.3	75.9	61.1	50.2	44.0	35.6	29.7	16.1
1.75V/cel l	560.6	448.6	382.2	268.9	212.7	168.7	101.7	77.1	62.4	51.4	45.1	36.2	30.0	16.2
1.70V/cel l	602.5	475.4	399.4	278.8	220.6	173.6	105.5	79.0	63.9	52.6	46.0	36.7	30.2	16.5
1.65V/cel l	645.6	502.2	422.3	292.8	225.2	178.8	108.1	82.2	65.9	54.0	46.9	37.2	30.8	16.7
1.60V/cel l	689.0	530.7	445.2	306.0	232.6	183.7	111.1	84.3	67.7	55.5	47.8	37.5	31.1	16.8

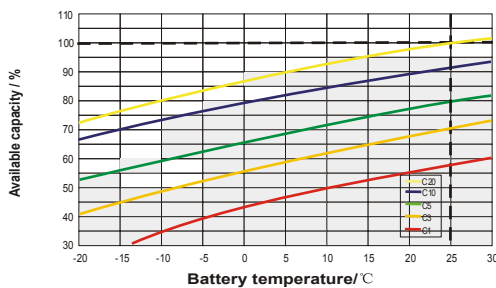
Discharge Characteristics



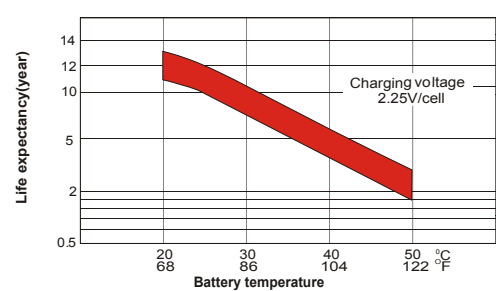
Charging Characteristics



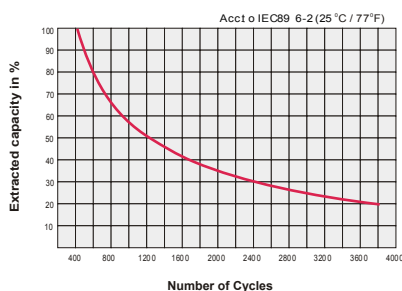
Temperature Effects in Relation to Battery Capacity



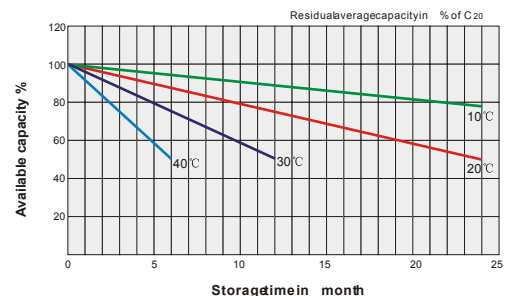
Effect of Temperature on Long Term Float Life



Cycle Life in Relation to Depth of Discharge



General Relation of Capacity VS. Storage Time







WHEN ENERGY CAN DO FURTHER



CONTACTS

 01010002030

 info@eic-egypt.com

 www.eic-egypt.com

 Km28 - Egypt Alexandria Desert Road - Abo rawash - Giza

 EICforBatteries